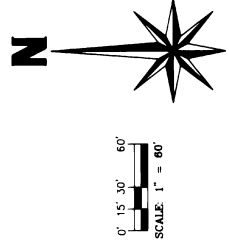
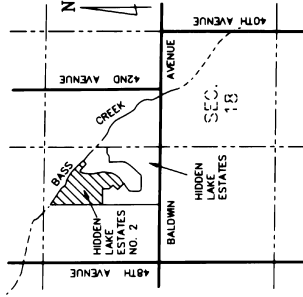


HIDDEN LAKE ESTATES NO. 2
 Part of the N.W. 1/4, Section 18, T6N, R13W,
 Georgetown Township, Ottawa County, Michigan
 Sheet 2 of 3

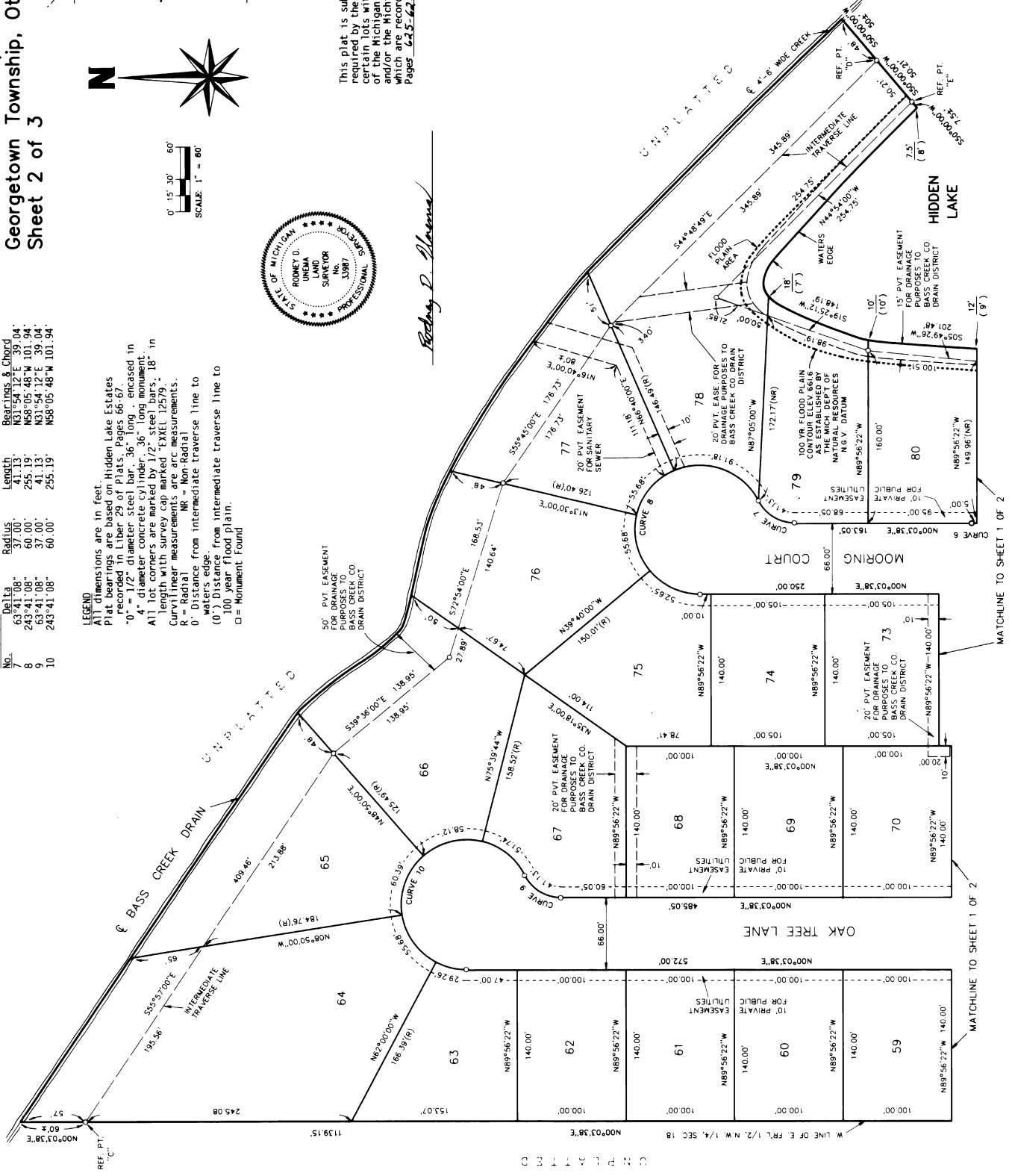
CURVE DATA	Radius	Length	Bearings & Chord
No. 1	60.00'	243.41'	N58°05'48" W 101.94'
2	60.00'	255.19'	N58°05'48" W 101.94'
3	60.00'	243.41'	N58°05'48" W 101.94'
4	60.00'	255.19'	N58°05'48" W 101.94'

LEGEND
 All dimensions are in feet.
 Plat bearings are based on Hidden Lake Estates recorded in Liber 29 of Plats, Pages 66-67.
 "0" = 1/2" diameter steel bar, .36" long, encased in 4" diameter concrete cylinder, .36" long monument.
 All lot corners are marked by 1/2" steel bars, 18" in length with survey cap marked EXCEL 125/9.
 Curvilinear measurements are arc measurements.
 R = Radius
 0' = Distance from monument to radial water's edge
 0' = Distance from intermediate traverse line to 100 year flood plain.
 (0') = Distance from intermediate traverse line to 100 year flood plain.
 □ = Monument Found



This plat is subject to restrictions as required by the Act 288 of 1967, as amended on certain lots with respect to the requirements of the Michigan Department of Natural Resources or the Michigan Department of Environment, which are recorded in Liber 1247 of records of this county. Pages 625-627

Rodney D. Plummer



CERTIFIED TRUE COPY OF
 RECORDED PLAT
 BY DEPARTMENT OF COMMERCE
 By *Harold R. Plummer*
 Maynard R. Director
 Acting Manager
 Plat Section

Date *January 24, 1995*

062-990