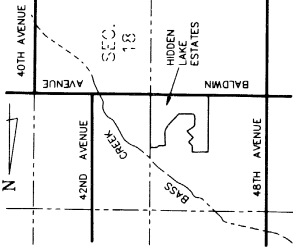


**HIDDEN LAKE ESTATES**  
 Part of the N.W. 1/4, Section 18, T6N, R13W,  
 Georgetown Township, Ottawa County, Michigan  
 Sheet 2 of 2



LOCATION MAP  
 NO SCALE

NO.	Delta	Radius	Length
10	89°26'58"	233.00'	363.76'
11	44°56'52"	167.00'	260.72'
12	44°56'52"	167.00'	260.72'
13	41°00'22"	233.00'	363.76'
14	41°00'22"	233.00'	363.76'
15	26°20'14.44"	60.00'	27.79'
16	41°00'52"	50.00'	35.79'

**LEGEND**

- ALL dimensions are in feet.
- Plat bearings were established from the recorded plat of Chateau West No. 4, Liber 26, Pages 26 & 27, "0" 1/2" diameter steel bar, 36" long, encased in concrete.
- ALL lot corners are marked with 1/2" steel monument.
- Curvilinear measurements are arc measurements.
- R = Radial NR = Non-Radial
- D = distance from intermediate traverse line to waters edge.
- (0') distance from intermediate traverse line to 100 year flood plain contour.

**PROPRIETOR'S CERTIFICATE**

We as proprietors certify that we caused the land embraced in this plat to be surveyed, divided, mapped and dedicated as represented on this plat and that the streets are for the use of the public; that the public utility easements are private easements and that all other easements are for the uses shown on the plat; lots 18 through 35, inclusive, extend to the water's edge of Hidden Lake and are subject to the correlative rights of riparian owners and to the public trust in the ways.

*William D. Shurlow*  
 William D. Shurlow  
 Manda M. Shurlow, wife

*Mary L. Grasman*  
 Mary L. Grasman  
 Neil A. Sharpe

*Mary L. Grasman*  
 Mary L. Grasman  
 My Commission Expires: 11/3/92

**COUNTY TREASURER'S CERTIFICATE**

The records in my office show no unpaid taxes or special assessments for the five years preceding June 11, 1991, involving the lands included in this plat.

Ottawa County  
*Mary A. Stephens*  
 Mary A. Stephens, Chief Deputy Treasurer

**COUNTY DRAIN COMMISSIONER'S CERTIFICATE**

Approved on June 11, 1991, as complying with Section 192 of Act 288, P.A. 1967, and the applicable rules and regulations published by my office in the County of Ottawa.

*Stephen Van Hooven*  
 Stephen Van Hooven, Drain Commissioner

**CERTIFICATE OF COUNTY ROAD COMMISSIONERS**

Approved on June 11, 1991, as complying with Section 183 of Act 288, P.A. 1967, and the applicable published rules and regulations of the Board of County Road Commissioners of Ottawa County.

*John R. Van Houten*  
 John R. Van Houten, Chairman  
*Frederick W. Schwallier*  
 Frederick W. Schwallier, Vice Chairman  
*Paul Van Mierren*  
 Paul Van Mierren, Member

**CERTIFICATE OF MUNICIPAL APPROVAL**

I certify that this plat was approved by the Township Board of the Township of Georgetown at a meeting held June 23, 1991, and was reviewed and found to be in compliance with Act 288, P.A. 1967. This plat is serviced with public sewer and water systems which are ready for connection. Surety for the placement of lot corners and monuments has been posted, and expires on November 29, 1991.

*H. Jack Hayes*  
 H. Jack Hayes, Clerk

**COUNTY PLAT BOARD CERTIFICATE**

This plat has been reviewed and is approved by the Ottawa County Plat Board on June 23, 1991, as being in compliance with all of the provisions of Act 288, P.A. 1967, and the Plat Board's applicable rules and regulations.

*Phyllis D. Bahman*  
 Phyllis D. Bahman, Registrar of Deeds  
*Genevieve C. Kruetz*  
 Genevieve C. Kruetz, County Clerk  
*Emilee Bahman*  
 Emilee Bahman, County Treasurer

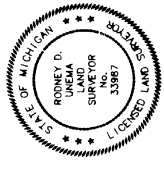
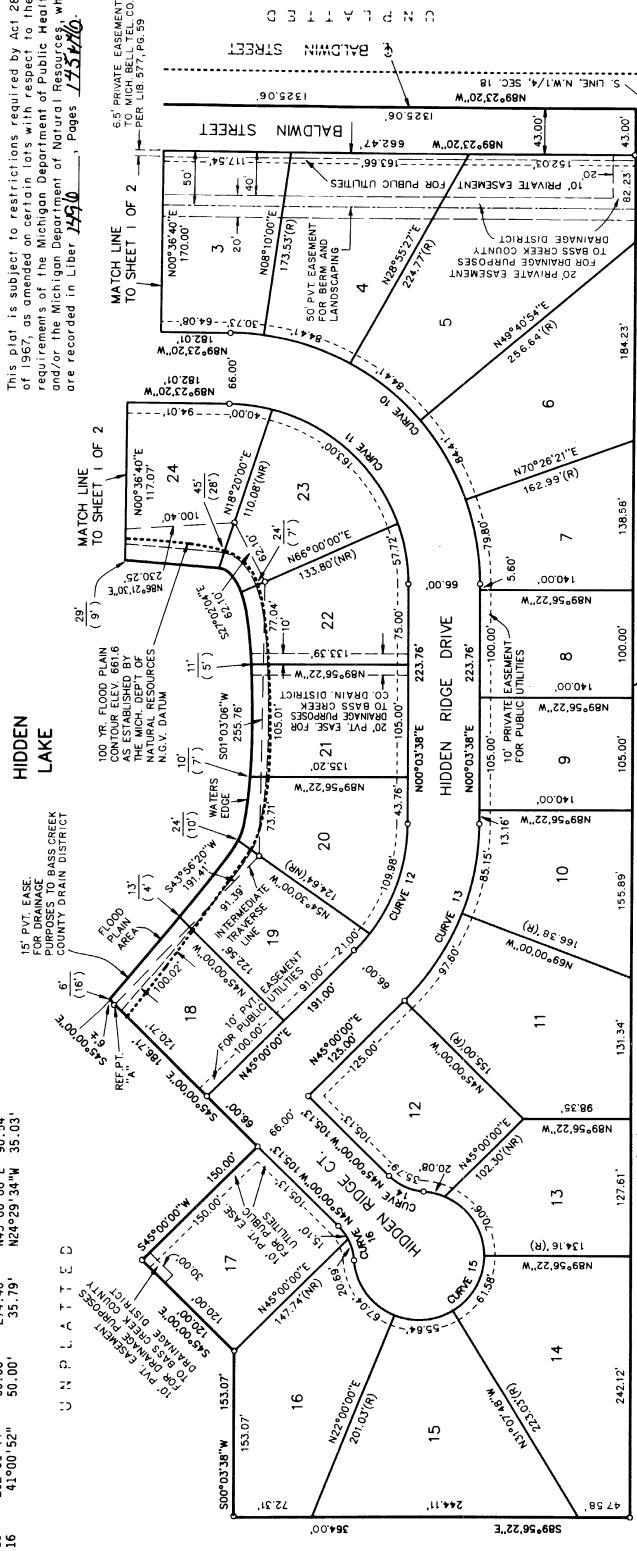
**RECORDING CERTIFICATE**

STATE OF MICHIGAN  
 County of Ottawa  
 This plat was received for record on this 11th day of July, 1991, at 2:20 P.M. and recorded in Liber 024 of Plats, Pages 167-171.

*Phyllis D. Bahman*  
 Phyllis D. Bahman, Registrar of Deeds

This plat is subject to restrictions required by Act 288, of 1967, as amended on certain lots with respect to the requirements of the Michigan Department of Public Health and/or the Michigan Department of Natural Resources, which are recorded in Liber 14510, Pages 175-176.

**UNPLATTED**



*Phyllis D. Bahman*